

IMASS™ ‘Integrated Multiplex Assay and Sampling System’ from BBI Detection

DEMONSTRATION/TRAINING IMASS™

Interpretation of results:

Lettering on the tests in this device indicates the expected results seen on the demonstration test strips – POS is positive, NEG is negative and INV is invalid. For operational devices the lettering would correspond to the analyte of interest e.g. RIC for ricin.

POSITIVE



– Two lines – a test line and a control line – indicates a positive result

NEGATIVE



– Presence of one control line indicates a negative result

INVALID



– No lines indicates an invalid result

INVALID



– No control line indicates an invalid result.

Further information:

- The IMASS™ device is single use only
- Operational biothreat detection IMASS™ devices can be used to sample surfaces, powders and liquids
- IMASS™ devices can be supplied containing tests for detection of up to 8 biothreat agents, or custom development of strips can be undertaken
- Test is designed to be read within 15 minutes of initiating sample flow. After this time, condensation may occur on the inner surface of the IMASS™.

Developed and Manufactured under licence from the UK Secretary of State for Defence
Pat. No. GB2460956. Pat. Pend: 12/999,064 and 09766120.1

IMASS Key Advantages:

- Simplicity in high pressure situations
- Rapid results
- Wide sampling area
- Rugged
- Sensitive and specific
- Containment of sample
- Low training burden
- No power requirements

IMASS™ 'Integrated Multiplex Assay and Sampling System' from BBI Detection

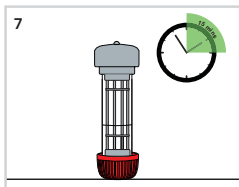
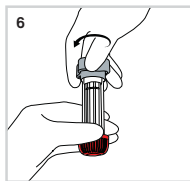
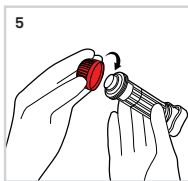
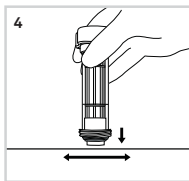
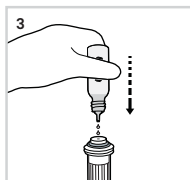
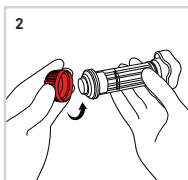
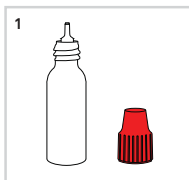
DEMONSTRATION/TRAINING IMASS™

Contents:

- 1 x IMASS™ demonstration device
- 1 x buffer container
- 1 x instruction card

Instructions for Use:

1. Remove cap from buffer bottle
2. Remove red cap from IMASS™ device
3. Add entire contents of buffer bottle to IMASS™ sponge
4. Sample non-porous surface – up to 1 square foot
5. Fully replace red cap
6. Fully engage grey driving nut
7. Place device vertically on a flat surface. Results will be visible in 2 to 15 minutes.



UK facility:
T: +44 (0)1382 569 900
US facility:
T: +1 (608) 310 4105
info@bbidetection.com
www.bbidetection.com

FOR TEST INTERPRETATION, SEE OVERLEAF