



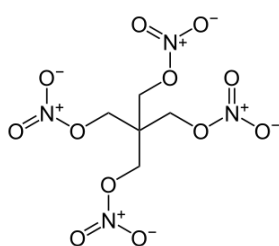
## ANTI-PETN MOUSE MONOCLONAL ANTIBODY

---

<b>Host</b>	Mouse
<b>Applications</b>	Lateral Flow, ELISA
<b>Isotype</b>	IgG1
<b>Immunogen</b>	PETN

---

### About PETN



PETN or pentaerythritol tetranitrate is a highly explosive organic compound belonging to the same chemical family as nitroglycerin and nitrocellulose.

A mixture of roughly equal amounts of PETN and trinitrotoluene (TNT) creates a military high explosive called pentolite. Mixed with the extremely powerful compound RDX in an appropriate solvent, PETN forms a plastic explosive mixture known as Semtex. Either alone or in the Semtex mixture, PETN is a valued weapon in terrorist bombings, because of its explosive power, its ability to be moulded and fitted into unusual packages, and the difficulty of detecting the organic compound with X-ray and other conventional equipment.

---

<b>Available antibodies</b>	EW75A
-----------------------------	-------

---

<b>Antigens detected</b>	PETN
--------------------------	------

---

### PETN Antibody Origin

The Hybridoma cell line secreting this monoclonal antibody was generated at Dstl Porton Down (A UK Government Agency: Defence, Science and Technology Laboratory). This monoclonal antibody is manufactured and sold under licence from Ploughshare Innovations Ltd on behalf of the Secretary of State for Defence.

---

To find out more visit [www.bbidedetection.com](http://www.bbidedetection.com)

## Characterisation

### SDS PAGE Analysis

#### Fig 1. Non Reduced Gel

Lane 1 Bio-Rad  
Kaleidoscope Lot:  
350002760

Lane 2 IgG Standard

Lane 9 EW75A

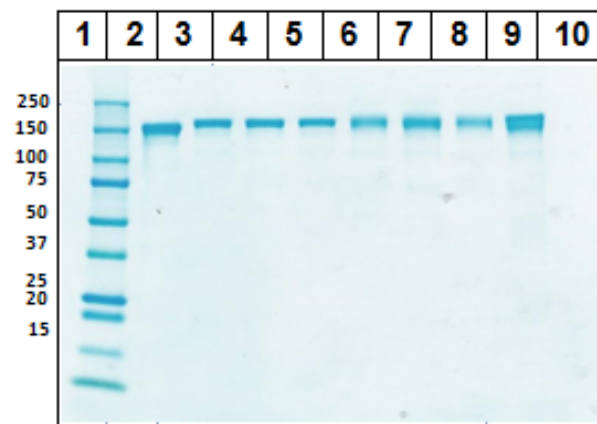


Fig 1.

#### Fig 2. Reduced Gel

Lane 1 Bio-Rad  
Kaleidoscope Lot:  
350002760

Lane 2 IgG Standard

Lane 9 EW75A

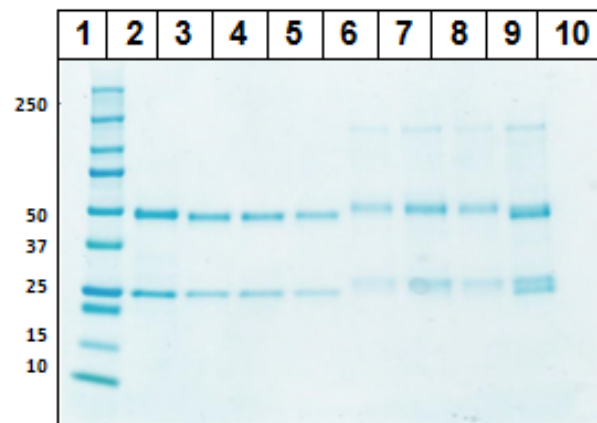


Fig 2.

## Why BBI Detection?

BBI Detection's antibody manufacturing team, based at Porton Down, can supply an extensive selection of antibodies for the detection of biothreat agents and explosives. A number of these antibodies are sold under licence from the UK Secretary of State for Defence.

**Certificates of analysis are available, please contact us for further information:**

**Email: [info@bbidetection.com](mailto:info@bbidetection.com)**

**Tel: +44 (0)1382 569 900**